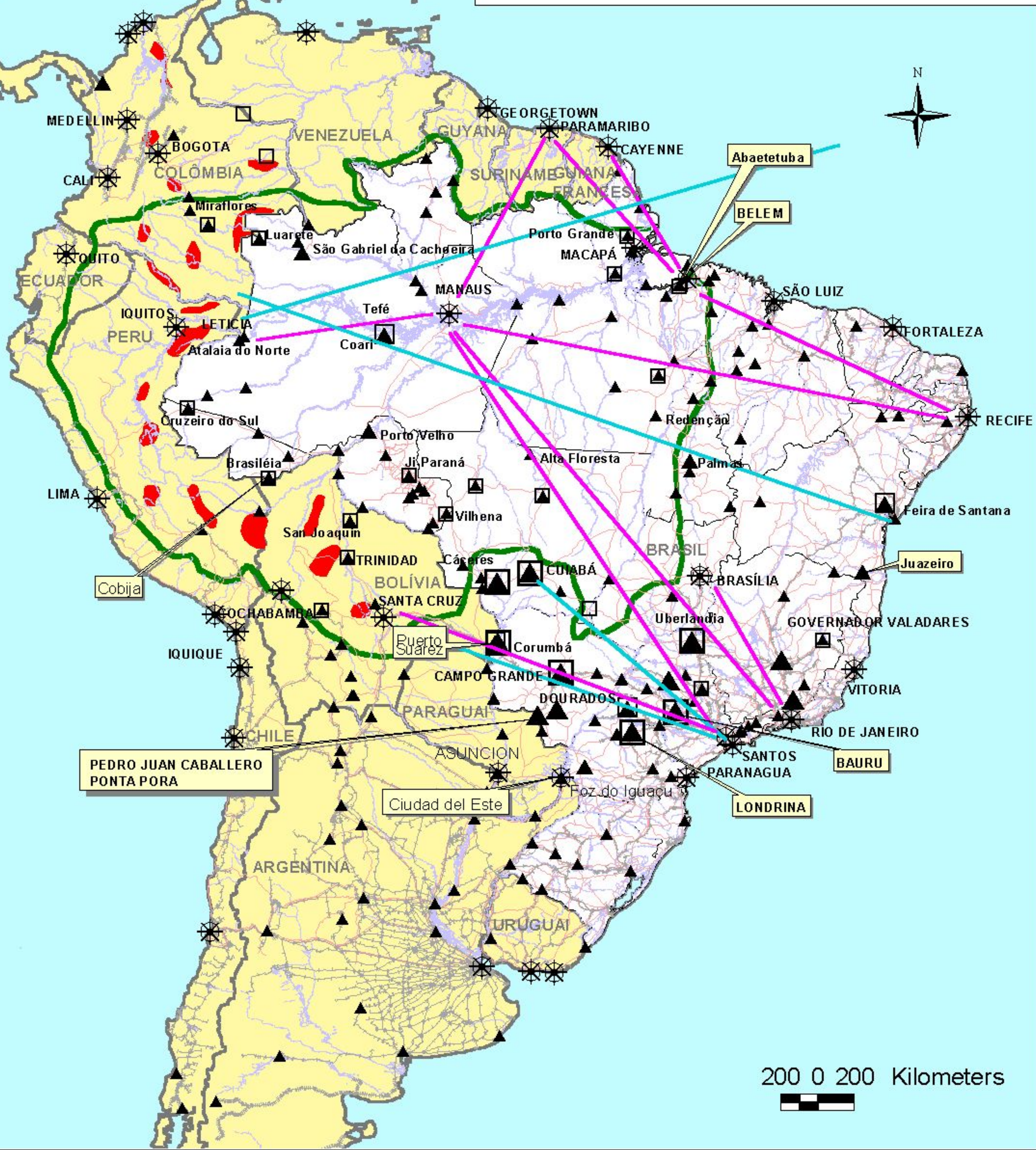









# Rede de Tráfico de Drogas - 2002



-  Rotas de Trânsito Aéreo
-  Rotas de Precursores Químicos
-  Ponto de Trânsito
-  Centro de Processamento
-  Plataforma de Exportação
-  Produção de Coca
-  Limite da Bacia Amazônica

Fontes: Base Espacial: IBGE, DCW, ESRI. Base de Dados: própria da pesquisa.

Organizado por Lia Osorio Machado. Departamento de Geografia - UFRJ. SIG: Murilo Cardoso de Castro - UFRJ.